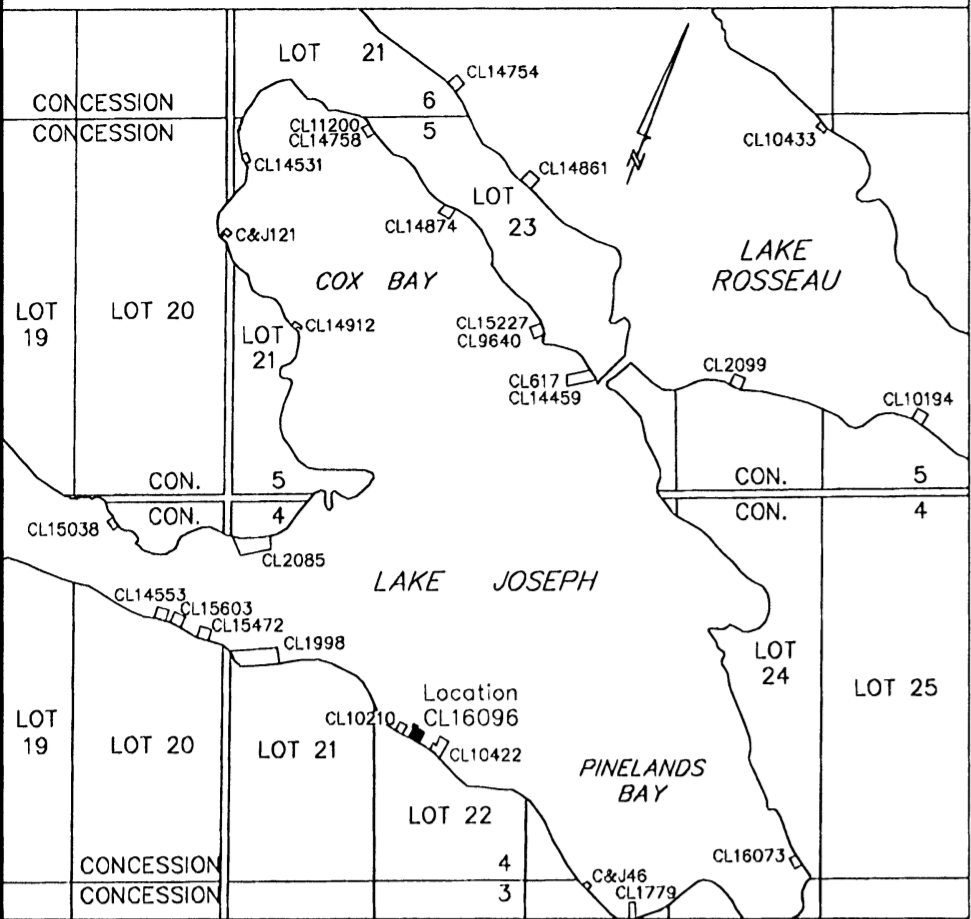


KEY PLAN SCALE 1 : 20000



POINT ID	NORTHING	EASTING
(A)	4995640.826	608341.478
(B)	4995634.913	608343.204
(C)	4995638.362	608358.119
(D)	4995645.223	608364.082

ALL COORDINATES ARE IN METRES, ARE RELATED TO UTM ZONE 17 (81°W LONGITUDE) NAD83 (CSRS)(1997.0) AND HAVE A RELATIVE ACCURACY TO MEET THE RURAL AREA REQUIREMENTS AT A 95% CONFIDENCE LEVEL.
 CO-ORDINATES CANNOT IN THEMSELVES BE USED TO RE-ESTABLISH CORNERS OR BOUNDARIES SHOWN ON THIS PLAN.

Radial Ties from (C) To Water's Edge	
Azimuth	Distance
289°51'	20.7
293°57'	19.9
298°53'	18.1
302°16'	15.8
306°54'	13.5
314°09'	11.1
326°02'	8.5
346°45'	7.0
3°17'	6.5
4°06'	7.0
14°15'	7.1
18°55'	6.9
20°34'	6.6
47°10'	8.7

SCHEDULE					
Part	Lot/Block	Con/Plan	Acres (Feet ²)	Hectares	PIN/Parcel Inst/Crown
1	Part of the Bed of Lake Joseph in front of Lot 22, Concession 4		0.03± (1310±)	0.012±	Crown
2			0.03± (1450±)	0.013±	
Total Area			0.06± (2760±)	0.025±	

PLAN 35R-23303

RECEIVED AND DEPOSITED
 DATE: August 19th, 2010
 "Mickene Osborne"
 Asst DEPUTY LAND REGISTRAR FOR THE LAND TITLES DIVISION OF MUSKOKA

I REQUIRE THIS PLAN TO BE DEPOSITED UNDER THE LAND TITLES ACT.
 DATE: APRIL 14, 2010
 John W. Hiley
 JOHN W. HILEY O.L.S.

PERMISSION TO DEPOSIT THIS PLAN OF SURVEY OF CROWN LAND WAS GIVEN BY THE SURVEYOR GENERAL OF ONTARIO ON THE 16th. DAY OF AUGUST, 2010.

BEARINGS ARE UTM GRID DERIVED FROM SIMULTANEOUS GPS OBSERVATIONS (RTK) ON MONUMENTS (B) AND (D) AS SHOWN HEREON, HAVING A GRID BEARING OF N63°43'10"E, NAD 83 (CSRS)(1997.0) AND ARE REFERRED TO THE CENTRAL MERIDIAN OF UTM ZONE 17 (81° W longitude).

DISTANCES ON THIS PLAN ARE HORIZONTAL GROUND DISTANCES AND CAN BE CONVERTED TO GRID DISTANCES BY MULTIPLYING BY THE AVERAGE COMBINED SCALE FACTOR OF 0.999714322.

FOR BEARING COMPARISONS A COUNTERCLOCKWISE ROTATION OF 1°01'10" WAS APPLIED TO PLANS BR-1500 & 35R-17207 TO CONVERT TO UTM BEARINGS.

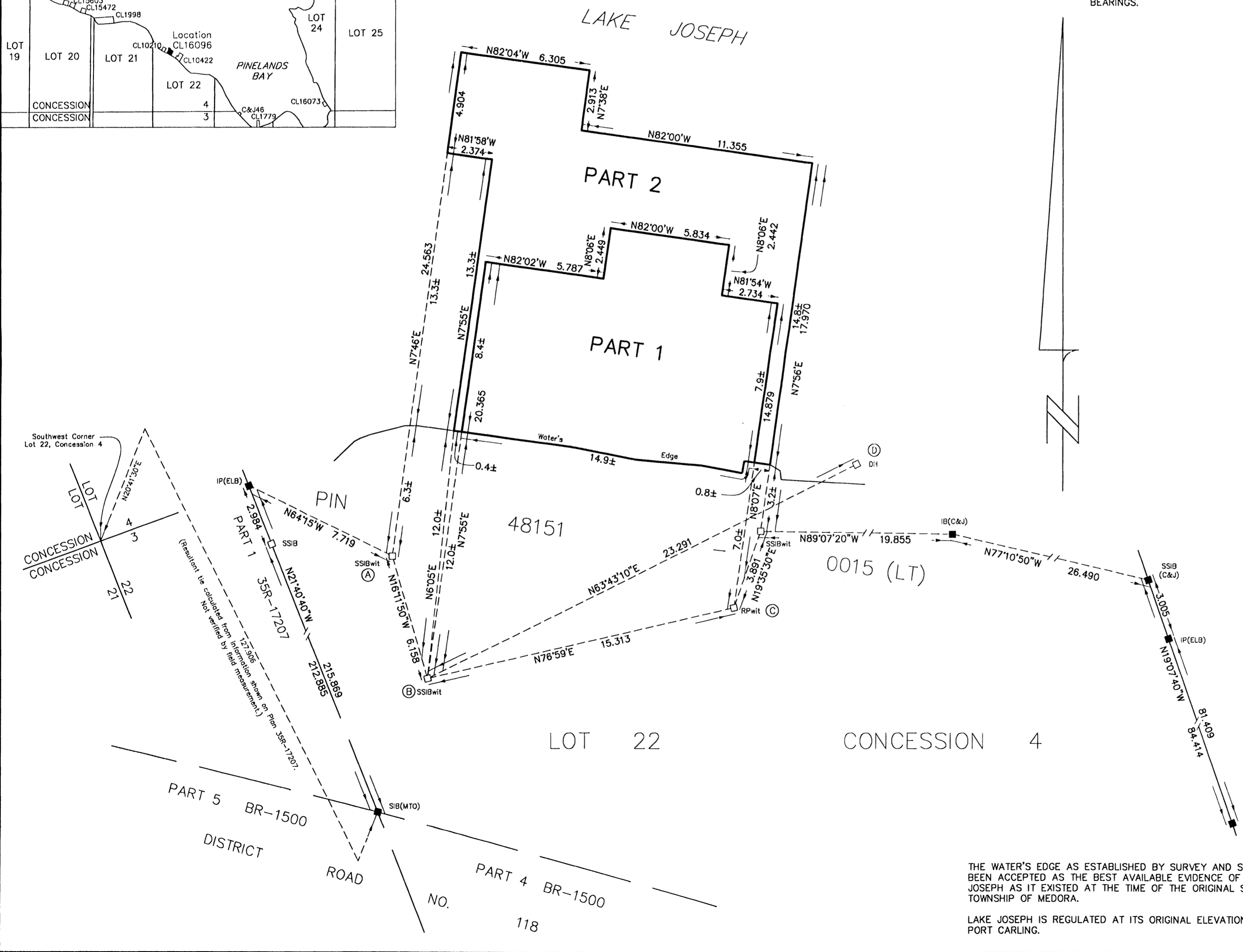
PLAN OF SURVEY OF LOCATION CL 16096 BEING PART OF THE BED OF LAKE JOSEPH IN FRONT OF LOT 22, CONCESSION 4 GEOGRAPHIC TOWNSHIP OF MEDORA TOWNSHIP OF MUSKOKA LAKES DISTRICT MUNICIPALITY OF MUSKOKA COOTE, HILEY, JEMMETT LIMITED



DISTANCES SHOWN ON THIS PLAN ARE IN METRES AND CAN BE CONVERTED TO FEET BY DIVIDING BY 0.3048.

LEGEND

- MONUMENT PLANTED
- MONUMENT FOUND
- SIB STANDARD IRON BAR
- SSIB SHORT STANDARD IRON BAR
- IB IRON BAR
- IP IRON PIPE
- RP ROCK POST
- DH DRILL HOLE
- 812 N.P. LYNDON O.L.S.
- C&J COOTE, HILEY, JEMMETT LIMITED
- ELB E.L. BURGESS O.L.S.
- MTO MINISTRY OF TRANSPORTATION ONTARIO
- CGVD28 CANADIAN GEODETIC VERTICAL DATUM 1928
- wit WITNESS



SURVEYOR'S CERTIFICATE

I CERTIFY THAT:
 1 - THIS SURVEY AND PLAN ARE CORRECT AND IN ACCORDANCE WITH THE SURVEYS ACT, THE SURVEYOR'S ACT AND THE LAND TITLES ACT AND THE REGULATIONS MADE UNDER THEM;
 2 - THE SURVEY WAS COMPLETED ON THE 12th. DAY OF AUGUST, 2009;
 3 - THIS PLAN AND FIELD NOTES WAS PREPARED FROM AN ACTUAL SURVEY PERFORMED UNDER MY PERSONAL SUPERVISION AND I WAS PRESENT ON THE SITE DURING THE PROGRESS OF THIS SURVEY.

APRIL 14, 2010 BRACEBRIDGE, ONTARIO
 John W. Hiley
 JOHN W. HILEY
 ONTARIO LAND SURVEYOR

THE WATER'S EDGE AS ESTABLISHED BY SURVEY AND SHOWN HEREON HAS BEEN ACCEPTED AS THE BEST AVAILABLE EVIDENCE OF THE EDGE OF LAKE JOSEPH AS IT EXISTED AT THE TIME OF THE ORIGINAL SURVEY OF THE TOWNSHIP OF MEDORA.

LAKE JOSEPH IS REGULATED AT ITS ORIGINAL ELEVATION BY THE DAM AT PORT CARLING.