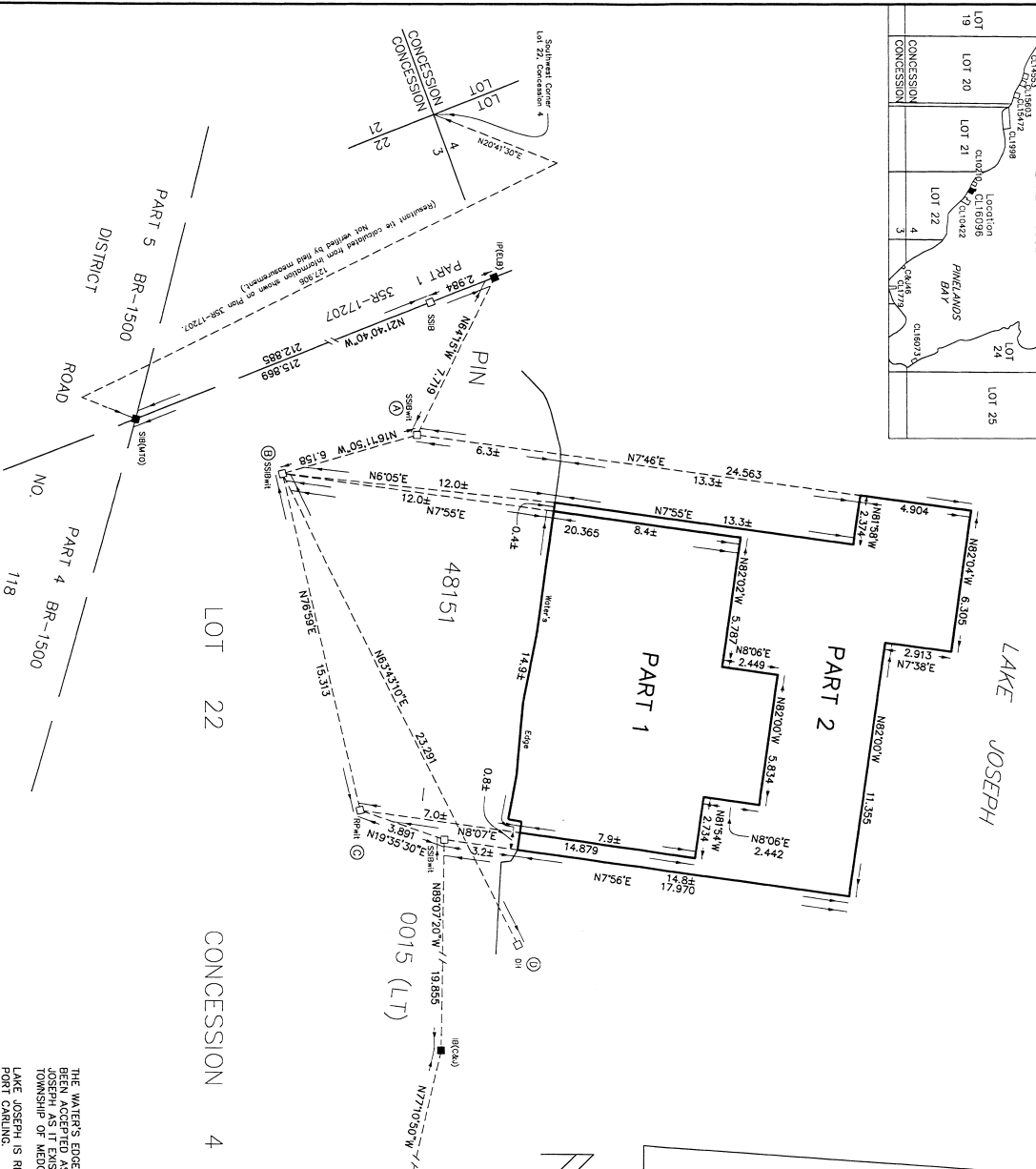


POINT ID	NORTHING	EASTING
Ⓐ	4936540.826	608341.478
Ⓑ	4939534.913	608343.204
Ⓒ	4939536.362	608356.119
Ⓓ	4939545.223	608354.082

ALL COORDINATES ARE IN METERS. ARE RELATED TO UTM ZONE 17 (81°W LONGITUDE) NAD83 (CSRS) (1997.0) AND HAVE A RELATIVE ACCURACY TO MEET THE RURAL AREA REQUIREMENTS AT A 95% CONFIDENCE LEVEL. THESE COORDINATES ARE FOR THE POINTS SHOWN ON THIS PLAN.

Radial Ties from	To Water's Edge	Distance
Ⓐ	289.51'	20.7
Ⓑ	293.53'	19.9
Ⓒ	307.16'	15.8
Ⓓ	300.94'	13.5
Ⓔ	316.03'	11.1
Ⓕ	317.17'	9.5
Ⓖ	4.06'	7.0
Ⓗ	14.15'	7.1
Ⓘ	18.95'	6.9
Ⓚ	20.34'	6.6
Ⓛ	47.10'	8.7



SURVEYOR'S CERTIFICATE

I CERTIFY THAT:

- 1 - THIS SURVEY AND PLAN ARE CORRECT AND IN ACCORDANCE WITH THE SURVEYOR'S ACT, THE SURVEYOR'S ACT AND THE LAND TITLES ACT AND THE REGULATIONS MADE UNDER THEM;
- 2 - THE SURVEY WAS COMPLETED ON THE 12th. DAY OF AUGUST, 2009;
- 3 - THIS PLAN AND FIELD NOTES WAS PREPARED FROM AN ACTUAL SURVEY OF THE LAND AND THE SURVEYOR WAS PRESENT ON THE SITE DURING THE PROGRESS OF THIS SURVEY.

APRIL 14, 2010
BRACEBRIDGE, ONTARIO

JOHN W. HILEY
ONTARIO LAND SURVEYOR

LEGEND

- MONUMENT PLANTED
- MONUMENT FOUND
- ▬ STANDARD IRON BAR
- ▬ SHORT STANDARD IRON BAR
- ▬ IRON PIPE
- ▬ ROCK POST
- ▬ DRILL HOLE
- ▬ N.P. LONDON O.L.S.
- ▬ N.P. LONDON O.L.S.
- ▬ E.M.T. HILEY & JEMMETT LIMITED
- ▬ E.M.T. HILEY & JEMMETT LIMITED
- ▬ MINISTRY OF TRANSPORTATION ONTARIO
- ▬ CANADIAN GEODETIC DATUM 1928
- ▬ WITNESS

SCALE 1 : 150

DISTANCES SHOWN ON THIS PLAN ARE IN METERS AND CAN BE CONVERTED TO FEET BY DIVIDING BY 0.3048.

PLAN OF SURVEY OF LOCATION CL 16096 BEING PART OF THE BED OF LAKE JOSEPH IN FRONT OF LOT 22, CONCESSION 4 GEOGRAPHIC TOWNSHIP OF MEDORA TOWNSHIP OF MUSKOKA LAKES DISTRICT MUNICIPALITY OF MUSKOKA COOTE, HILEY, JEMMETT LIMITED

SCHEDULE

Part	Lot/Block	Con/Plan	Area (Feet ²)	Area (Hectares)	Pin/Parcel Ident./Comm
1	Part of the Bed of Lake Joseph (1310E)		0.0134	0.0124	Crown
2	Lot 22, Concession 4		14932	0.0134	
Total Area			0.0268 (2725E)	0.0258	

Geographic Township of Medora

BEARINGS ARE UTM GRID DERIVED FROM SIMULTANEOUS GPS OBSERVATIONS (RTK) ON MONUMENTS Ⓐ AND Ⓑ AS SHOWN HEREON, HAVING A GRID BEARING OF N63°43'10"E AND 83 (CSRS) (1997.0) AND ARE REFERRED TO THE CENTRAL MERIDIAN OF UTM ZONE 17 (81° W longitude).

DISTANCES ON THIS PLAN ARE HORIZONTAL GROUND DISTANCES AND CAN BE CONVERTED TO UTM GRID DISTANCES BY APPLYING BY THE AREA'S COMBINED SCALE FACTOR OF 0.999714322.

FOR BEARING COMPARISONS A COUNTERCLOCKWISE ROTATION OF 101°10' WAS APPLIED TO PLANS BR-1500 & 358-17207 TO CONVERT TO UTM GRID BEARINGS.

RECEIVED AND DEPOSITED
AUGUST 10th 2010
"Metteve Osobane"
LAND TITLES DIVISION OF MUSKOKA

DATE: APRIL 14, 2010

I REQUIRE THIS PLAN TO BE DEPOSITED UNDER THE LAND TITLES ACT:

JOHN W. HILEY
O.L.S.

PERMISSION TO DEPOSIT THIS PLAN OF SURVEY OF CROWN LAND WAS GIVEN BY THE SURVEYOR GENERAL OF ONTARIO ON THE 10th. DAY OF AUGUST, 2010.

PLAN 358-23303