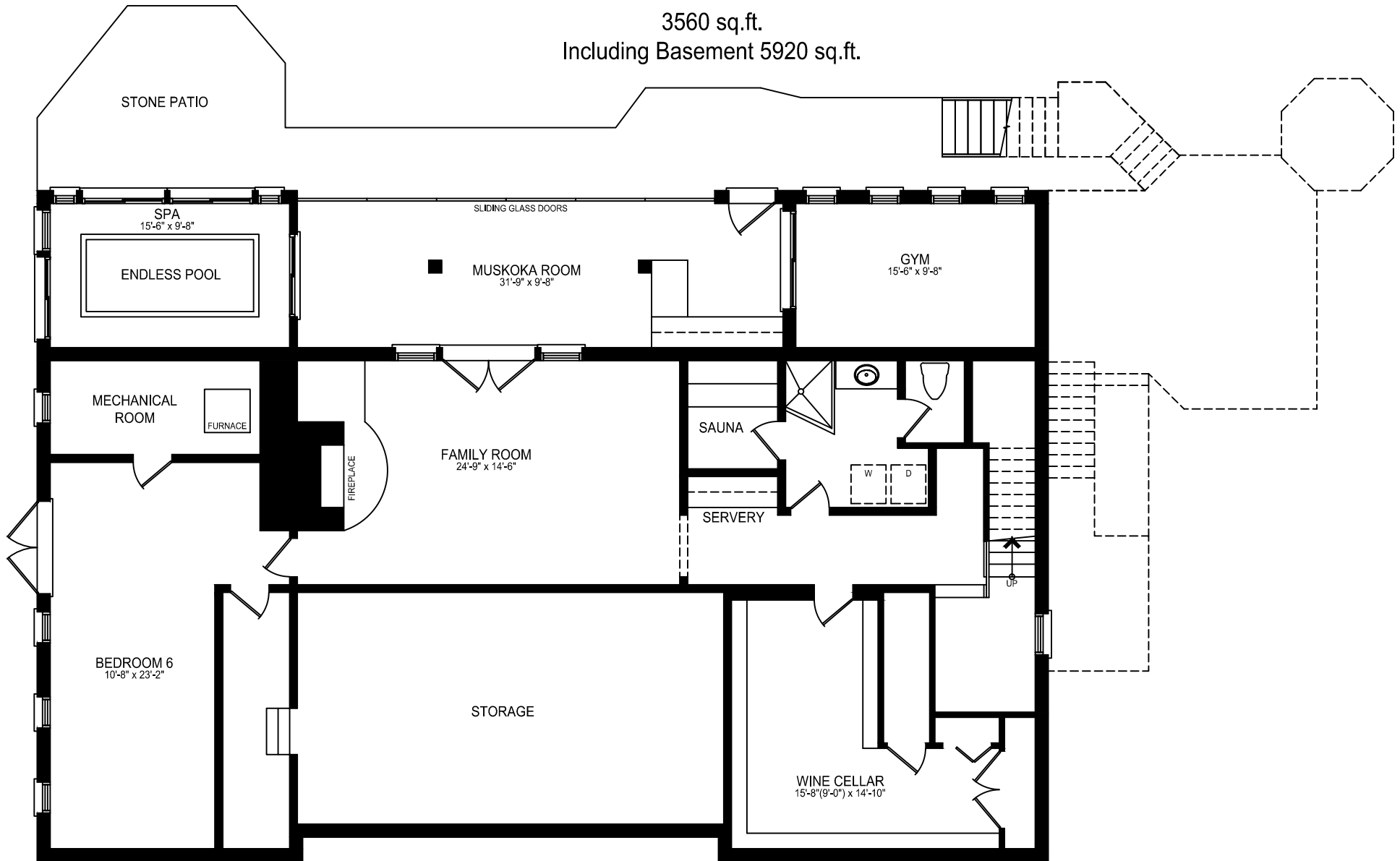


# 1045 Chown Road

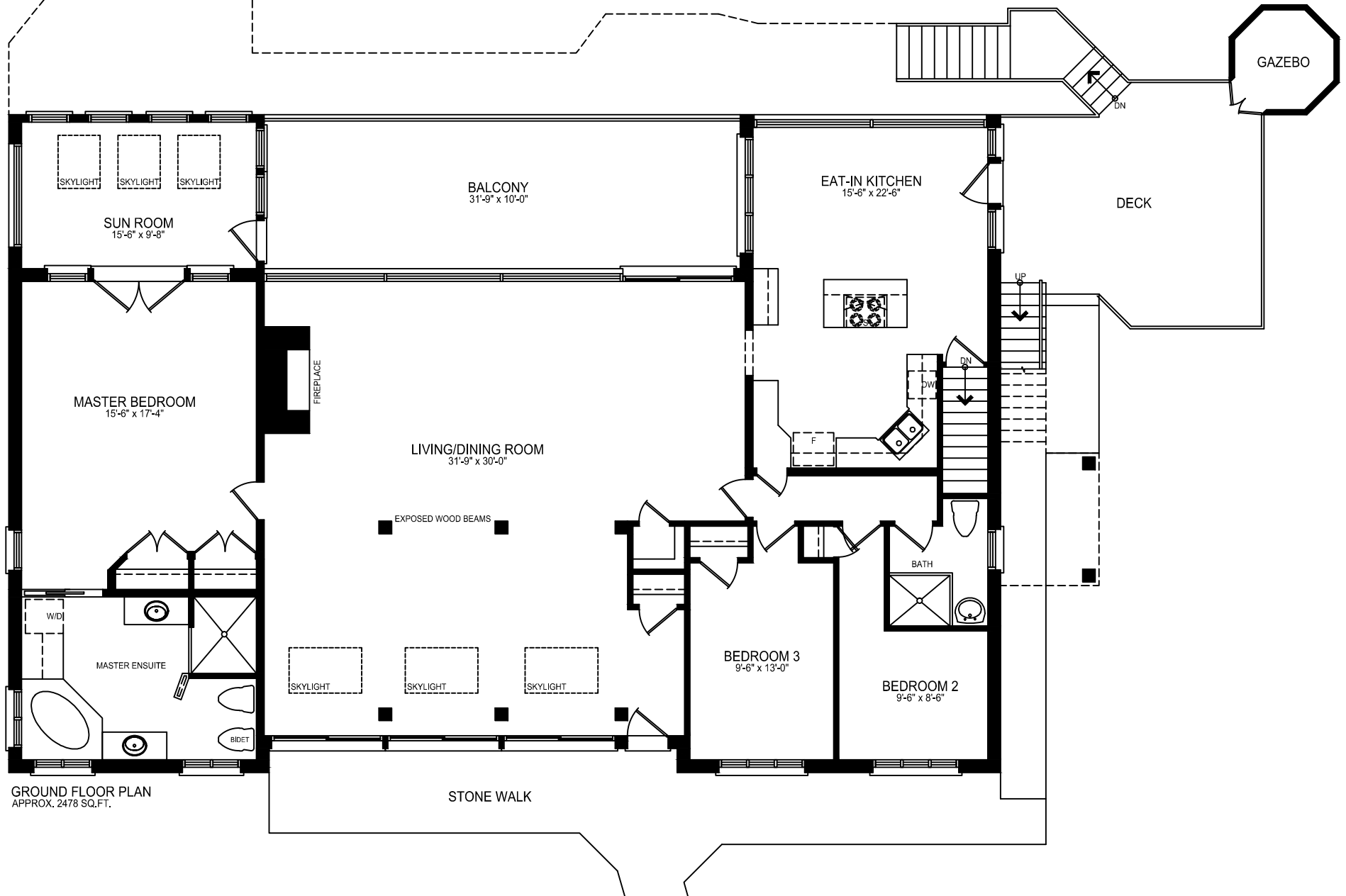
3560 sq.ft.  
Including Basement 5920 sq.ft.



LOWER LEVEL FLOOR PLAN  
APPROX. 2361 SQ.FT.

# 1045 Chown Road

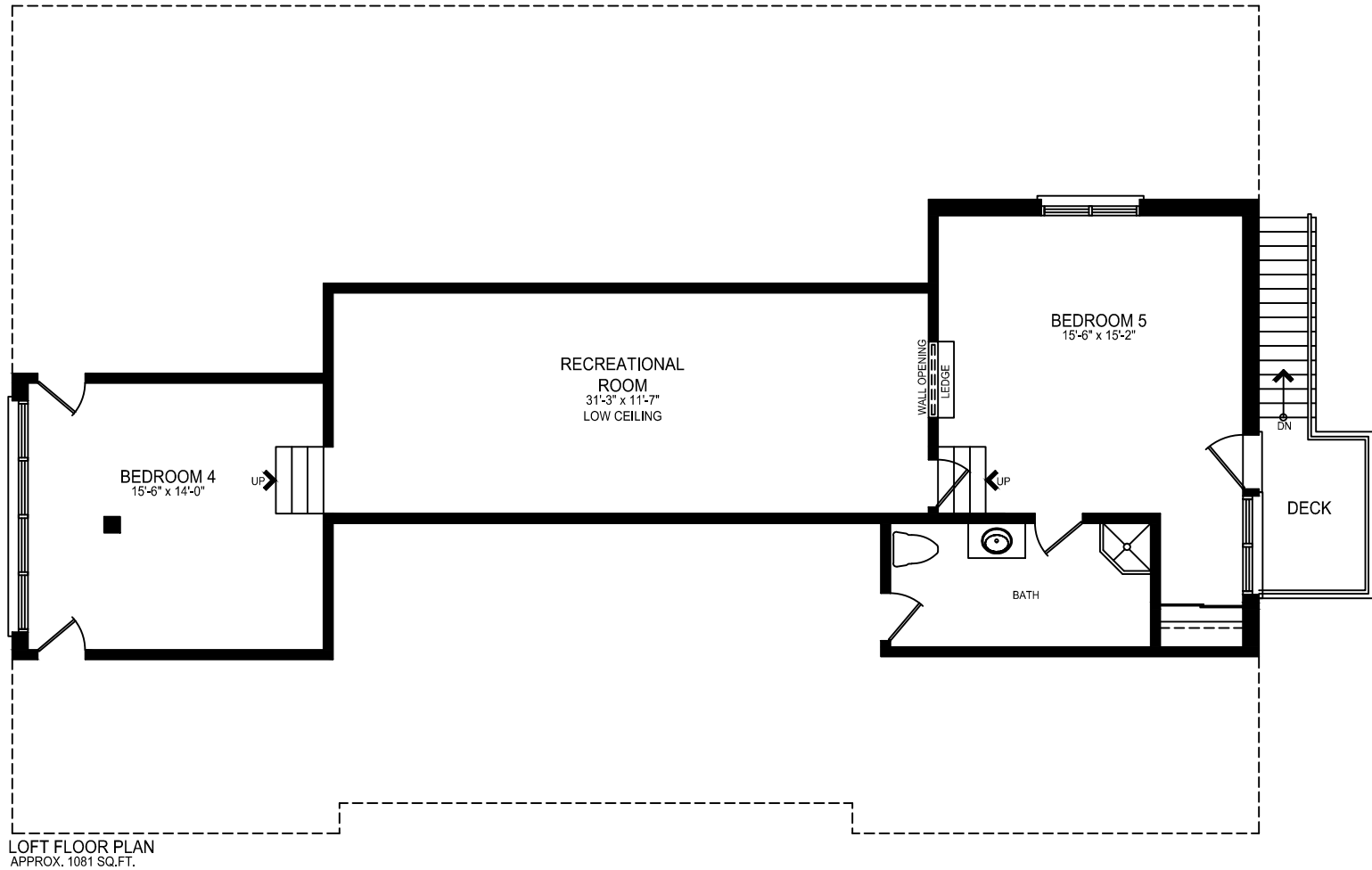
3560 sq.ft.  
Including Basement 5920 sq.ft.



# 1045 Chown Road

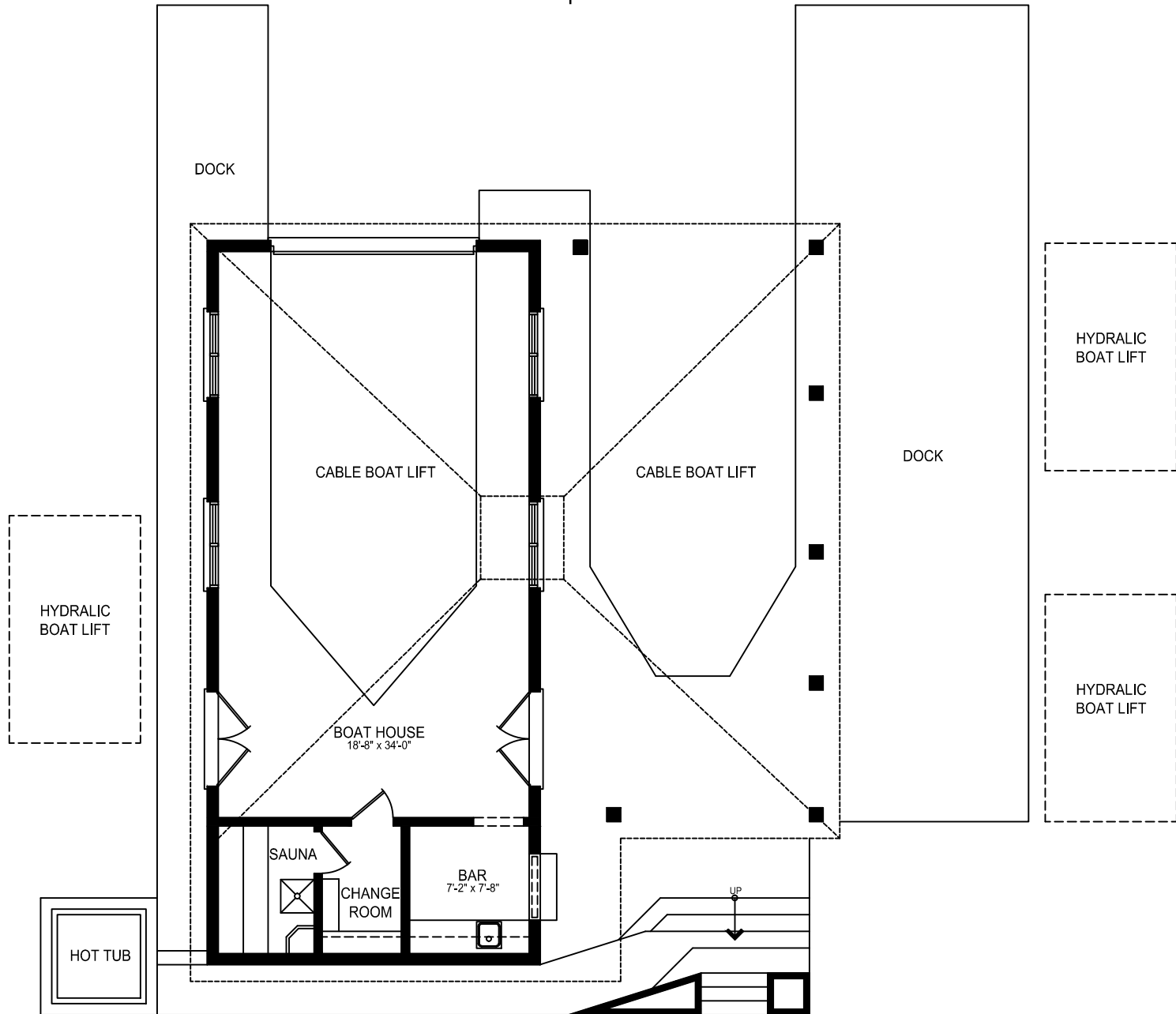
3560 sq.ft.

Including Basement 5920 sq.ft.



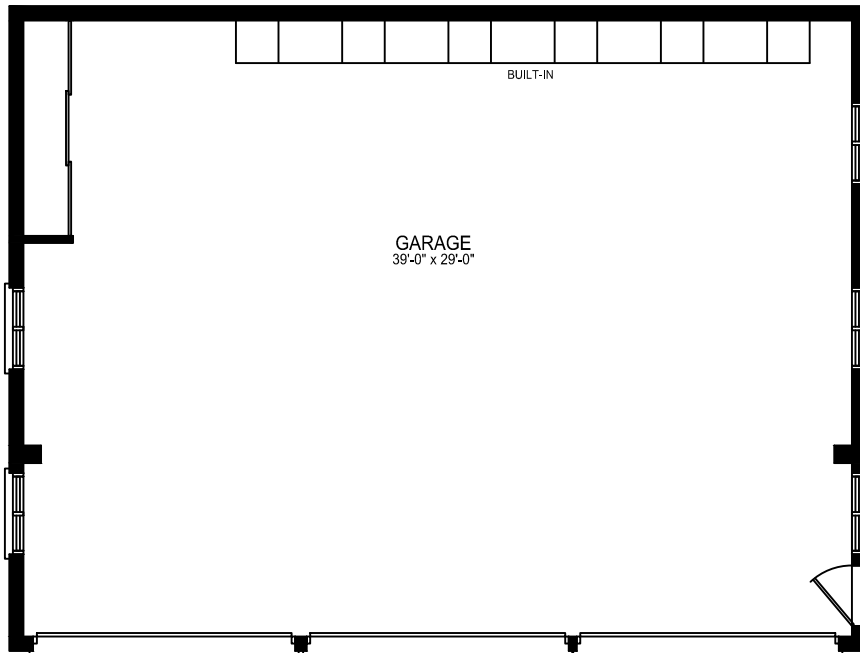
# 1045 Chown Road

870 sq.ft.



# 1045 Chown Road

1615 sq.ft.



GROUND FLOOR PLAN  
APPROX. 1225 SQ.FT.



LOFT FLOOR PLAN  
APPROX. 380 SQ.FT.